

# advice, counselling & training

advice line: t. 020 7284 5879

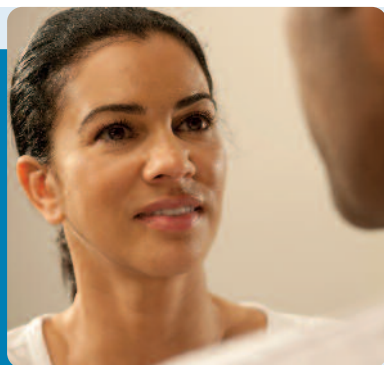
PAC was founded in 1986 to meet the needs of adults and children experiencing problems arising from adoption. Its origins were in a growing recognition that adoption raises issues for all parties involved at various stages of their lives.

PAC has developed a range of professional support services which reflect the complexities of adoption, as well as long term fostering and special guardianship. Each year PAC receives around 1,800 requests for help from people affected by adoption and other forms of permanent care, as well as the professionals who support them.

## PAC is for...

- adoptive **families** and other families with permanently placed children
- adoptive **parents**, prospective adoptive parents and other permanent carers
- individual **adults** adopted as children
- **birth parents** and **birth relatives** of adopted children, and of now adult adopted children
- **professionals** working with adoption and permanent care

PAC has particular expertise in working with minority ethnic children, families and adults and with transracially adopted children and adults.



## PAC staff

PAC's counsellors and therapists are professionally qualified in psychological counselling/therapy, and/or psychology and/or social work. They have a wide range of experience and training in adoption and permanent placement support work.

Counselling staff are supported by external professional supervisors and an administrative team.

 [pac.org.uk](http://pac.org.uk)

## PAC services

### telephone advice line

- for advice and information

### one-off consultations

- initial exploration and advice on adoption and permanent placement concerns; information on PAC's other services

### assessments of

- any individual concerns or difficulties
- parenting concerns
- effects of early histories marked by separation/s, neglect, abuse and other traumas
- attachment, emotional and behavioural difficulties
- issues around contact with birth parents or other birth relatives
- future placement needs and support
- court instructed matters

### counselling & intensive therapeutic support

- individual face-to-face counselling
- telephone counselling
- intermediary service
- parent and couple counselling
- intensive therapeutic family work
- therapeutic life story work
- early placement parenting support

### groups

- PAC runs various groups every year
- groups can be drop-in, time-limited, or one-off

### training & workshops

- PAC has an extensive yearly training programme that offers seminars and workshops for parents, carers and professionals

### bespoke services & training

- PAC welcomes your requests

## Cost of PAC services

For further information on our fees visit our website or call the **advice line on 020 7284 5879.**

Services can be commissioned by local authorities. Private funding is welcome too.

PAC is a registered charity. In addition to income from contracts with local authorities we depend on fees, grants and donations to continue our work.

## PAC locations

Services are available on weekdays at our main office in Kentish Town, London (see *map and address on back*).

Alternatively, individual adult counselling, parent consultations and professional consultations are offered on a monthly basis at venues in a number of local authority areas across London and the south east.

## Equal opportunities

PAC is committed to providing a service based on racial equality and equal opportunities. It has an ethnically and culturally diverse staff and believes in the unique value and right to respect of each individual.

If you have a preference as to the ethnicity or gender of your counsellor, PAC will endeavour to accommodate your request. Our main premises in Kentish Town, London are wheelchair accessible.

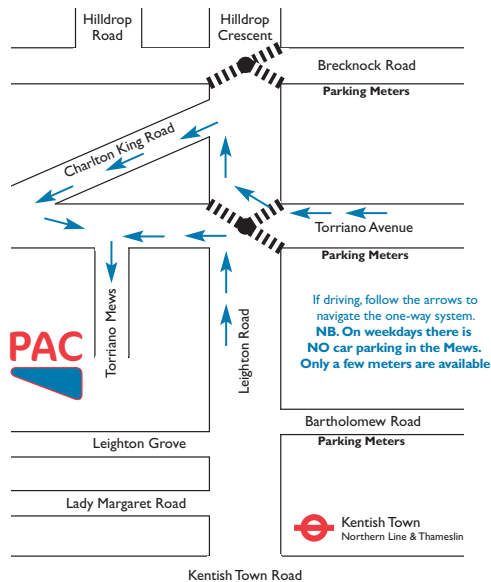
## Your first contact point

### Advice Line

tel. 020 7284 5879

Mon - Fri 10am - 1pm Thu 5.30pm - 7.30pm

email: [advice@pac.org.uk](mailto:advice@pac.org.uk)



Pre-adoption  
Post-adoption  
Permanency

Advice &  
Counselling

# adoption & permanent placement support



for all concerned, at any stage



Pre-adoption  
Post-adoption  
Permanency  
Advice &  
Counselling

5 Torriano Mews,  
Torriano Avenue  
London NW5 2RZ

tel: 020 7284 0555  
fax: 020 7482 2367  
advice: 020 7284 5879

email: [advice@pac.org.uk](mailto:advice@pac.org.uk)  
web: [www.pac.org.uk](http://www.pac.org.uk)

specialist advice  
counselling  
and training

Registered charity: 294998  
Company limited by guarantee: 2040322  
PAC is registered with Ofsted under the Care Standards Act 2000 as an Adoption Support Agency.  
Ofsted registration: SC066981